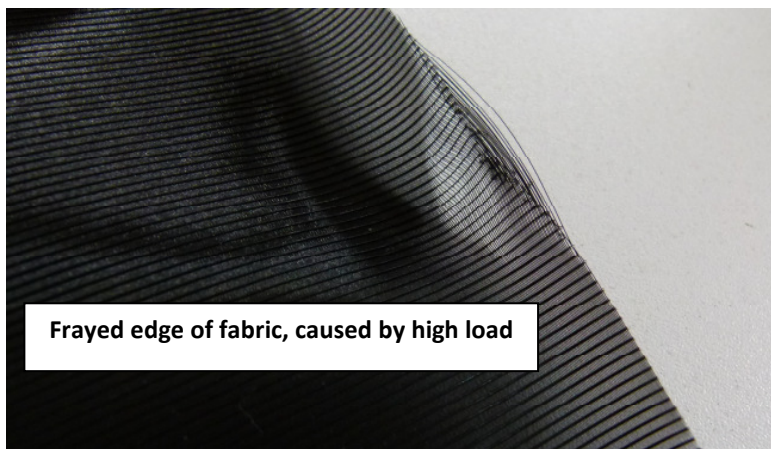


General advices for fabric-handling during preparation of embedding ETTLIN/*lux*[®] into laminated glass

Fabric handling/ characteristics:

ETTLIN *lux*[®] fabrics are highly sensitive to buckling. Also single yarns can be displaced when they are exposed to a high load. .Therefore the fabric should **not be folded, treated gently** and be **transported and stored on a roll**.

When high load is placed punctually on the ETTLIN *lux*[®] Mood Fabric, the material can become frayed or go baggy at this very spot. High load on one spot (for example between two fingers) should be avoided – especially in the area of the edge.



The two sides of the ETTLIN *lux*[®] Mood Fabric have two different surfaces. One side is very plain, on the other a black yarn system is defined as grooves or ribs. The difference becomes clear when scratching carefully with the finger nail across both sides.

These differences of the surface can be important in calender processes. The side with the rib-shaped surface will, when under pressure, behave differently in both fabric directions because the groovings act as canals. Therefore the rib should always be directed into the same direction as production.

The lighting effect will always develop in the direction of the black ribs. Hence this fabric-direction is called „direction of effect“.

General advices for fabric-handling during preparation of embedding ETTLIN/lux® into laminated glass

Separating the fabric:

For separating the fabric there are the following possibilities:

Cutting	<p>All ETTLIN <i>lux</i>® fabrics can be cut with scissors, craft knives or a rotary cutter. Hereby the cutting edges will remain open. Additional fixing of the cutting edges is not necessary. When using a craft knife or a rotary cutter, guiding assistance is necessary to get a clean cut.</p> <p>Electric scissors can also be used, but in this case guiding assistance should be used as well.</p> <p>Recommendation: The best results are achieved with a rotary cutter.</p>
Hot cutting	<p>All ETTLIN <i>lux</i>® fabrics can be cut with a hot cutting machine. Sometimes fixation of the cutting edges can take place at the same time. This depends on the cutting speed.</p>
Ultrasonic separating	<p>Ultrasonic welding is possible using a hand-held device (stationary sonotrode) or a large ultrasonic welding machine (stationary or rolling sonotrode). The fabric is cut and at the same time cutting edge fixation takes place.</p>
Laser cutting	<p>Laser cutting is possible with all ETTLIN <i>lux</i>® fabrics. Thereby the cutting edges are fixated in the same step.</p>

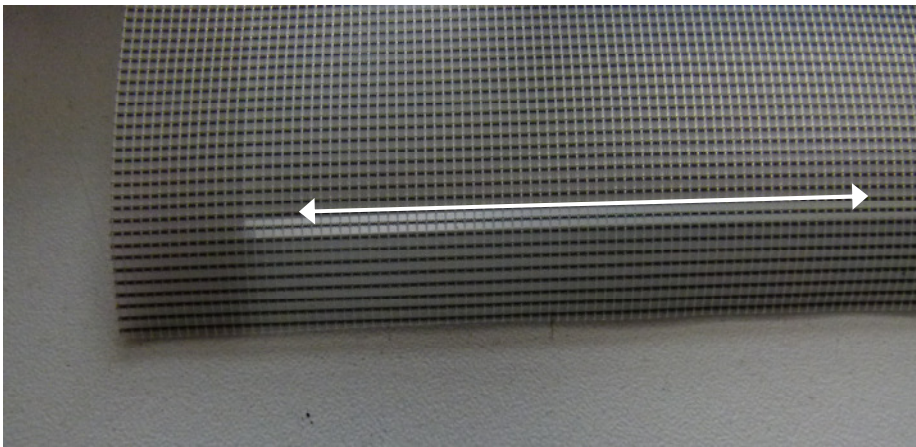
General advices for fabric-handling during preparation of embedding ETTLIN/lux® into laminated glass

Fabric adjustment at the glass edge:

Cut fabric adequately, thereby take size of the pane as pattern and add 5-10 cm at each side.

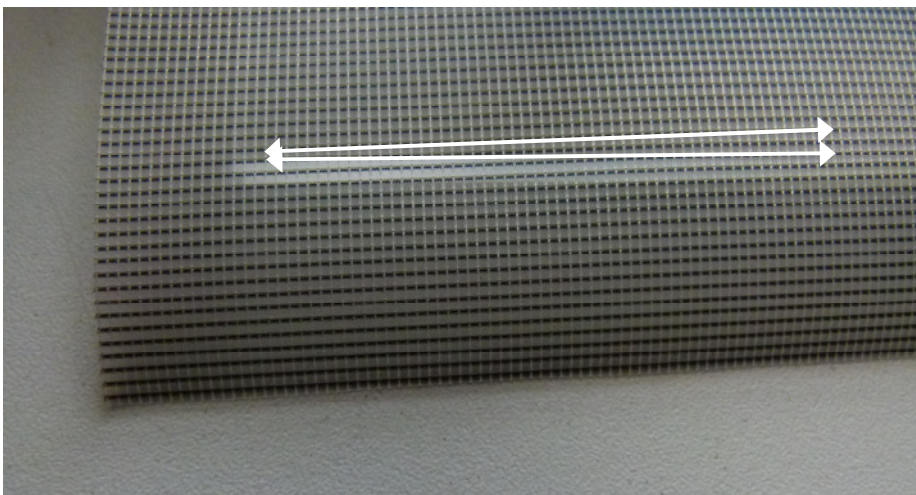
Lay fabric evenly on the pane and adjust in fabric grain direction. This can be made easy if you orientate yourself by a thread of the black thread system with a fingernail.

The black thread system is present in every ETTLIN lux® Mood Fabric. As the distance between two neighbouring threads is relatively large, orientation is very easy here.



← Thread system and glass edge run along parallel

Image 1: The fabric is adjusted correctly to the glass edge



← Thread system
← glass edge
don't run along parallel

Image 2: The fabric lies inclined to the glass edge