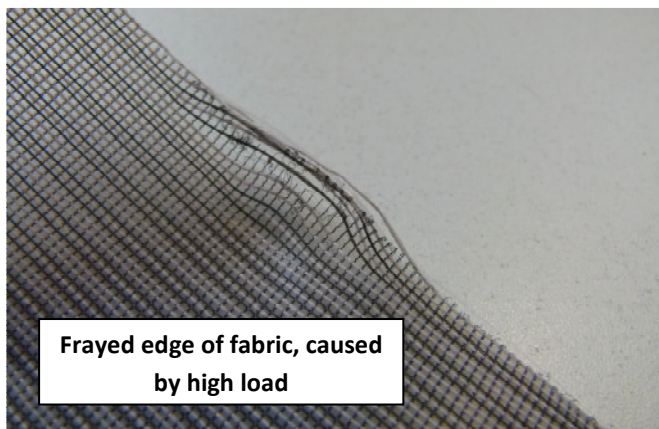


## General advices for ETTLIN *lux*® | Decolux

ETTLIN *lux*® Decolux fabrics are highly sensitive to buckling. Also single yarns can be displaced when they are exposed to a high load. Therefore the fabric should not be folded, treated gently and be transported and stored on a roll.

### Fabric characteristics:

- If there are kinks in the surface of the material, they can be treated carefully by hot air or by ironing. Start with low temperature (smallest setting or 1 point) and increase carefully, if the kinks do not improve.  
**Caution:** Do not use temperature higher than 130°C to avoid deformation of the material. Only expose to temperature for a short time.  
The ETTLIN *lux*® Decolux fabrics can also be ironed with steam. When using steam, the material is less sensitive to high temperatures.
- The ETTLIN *lux*® Decolux fabrics cannot be stretched. It is necessary to work very correctly while tailoring or clamping. Keep exactly to measurements. Inaccuracy or differences in lengths or distances, which occur while sewing cannot be adjusted later by pulling, because the material is not flexible.
- When high load is placed punctually on the ETTLIN *lux*® Decolux fabrics, the material can become frayed or go baggy at this very spot. High load on one spot (for example between two fingers) should be avoided – especially in the area of the edge.



- The two sides of the ETTLIN *lux*® Decolux fabrics have two different surfaces. On one side there is a black yarn system that is defined as grooves. On the other side these black yarns are less visible, but the chromaticity as well as the patterning of the fabric is more distinctive. This side should be used as the visible face.

## General advices for ETTLIN *lux*<sup>®</sup> | Decolux

### Cleaning:

Stain or dust removal:

- Use a cleaning cloth that is slightly wet
- Wipe the fabric surface with light pressure; in doing so please pay attention to the direction of the fabric:
  - On the visible face only wipe orthogonally to the direction of effect
  - On the back side only wipe in direction of effect
  - Never wipe in a slanted direction!
  - Clean the whole fabric surface with constant but light pressure
- Do not use aggressive cleaning agent
- If necessary, apply mild cleaning agent (e.g. neutral cleaning agent) on the cloth, afterwards use a cloth with clear water
- In case of a wall covering, loose dust can be removed with a vacuum cleaner (upholstery brush should be used!)